



Vocal Music Virtual Learning

7/8 Honor Choir

Sight Reading Strategies

May 22, 2020



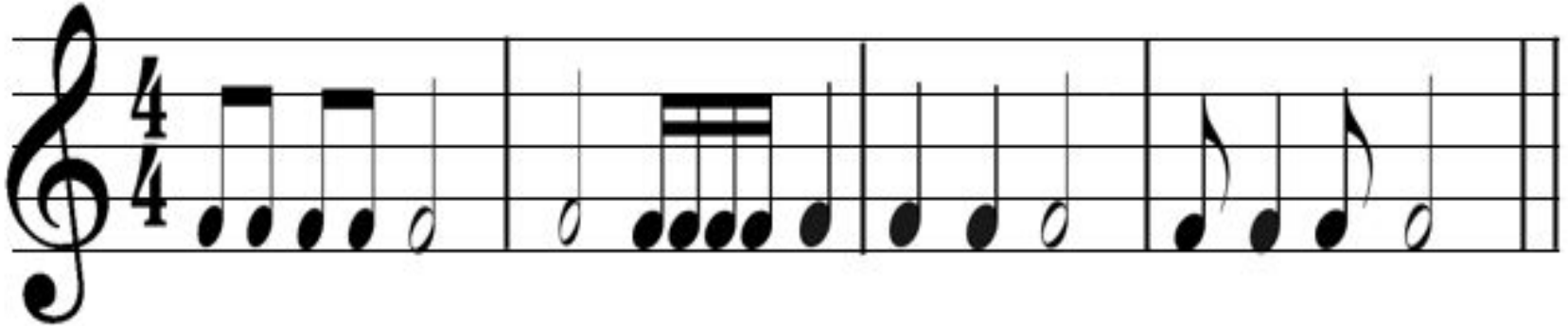
7/8 Honor Choir
Lesson: 5/22/2020

Objective/Learning Target:

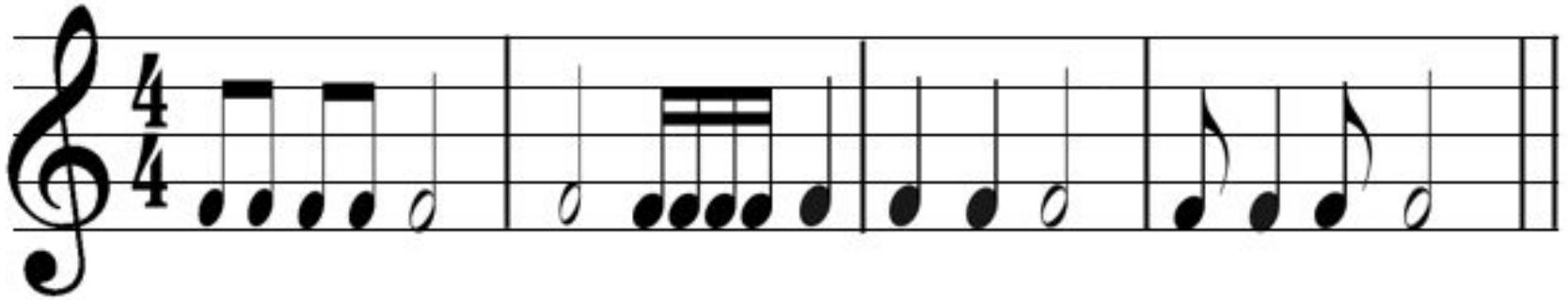
Breaking Down Music for Sight Reading

Warm Up Activity:

Try writing in the rhythm language, then the counts for the example below:



Warm Up Answers:



Ti-ti Ti-ti Ta-a Ta-a Tika Tika Ta Ta Ta Ta-a Syn-co-pa Ta-a

1 & 2 & 3 4 1 2 3 e & a 4 1 2 3 4 1 & & 3 4



Sight Reading is one of the most challenging skills to develop, but can be the most helpful when learning new and challenging music. Next, we're going to take an example and break it down into smaller pieces in order to help process it quickly and accurately.

Below is the example we'll use for the remainder of this section. First, please go through and mark the counts. In order to do this, you need to identify the # of beats per measure and what note gets the beat.



Check out the counts and necessary time signature for the first step below:

If you look at the time signature, you'll see that there are 3 beats per measure and the quarter note gets the beat. Now for the counts.

A musical staff in 3/4 time signature, starting with a treble clef and a key signature of two flats (B-flat and E-flat). The notation consists of eight measures. The notes are: Measure 1: quarter, quarter, quarter; Measure 2: eighth, eighth, quarter, eighth, eighth, quarter; Measure 3: quarter, quarter, quarter; Measure 4: quarter, quarter, quarter; Measure 5: quarter, quarter, quarter; Measure 6: quarter, quarter, quarter; Measure 7: quarter, quarter, quarter; Measure 8: quarter, quarter, quarter. Below the staff, the counts for each measure are: 1 2 3, 1 & 2 & 3, 1 2 3, 1 2 3, 1 and 3, 1 2 3.

After practicing the rhythm a couple times, next up are the pitches. Take a moment to identify the key signature, where “do” goes, and the the corresponding solfege (look back to lessons from last week if you’ve forgotten how to do this). All of this information can be gathered from the Key Signature.



Key Signature and Solfege Identification:



Key: E \flat Do Re Do Sol Fa Mi Re Do Mi Fa Sol La Ti Do

If you want to practice singing this, you can google “e flat pitch” to get a reference point. I challenge you do try and sing this with correct rhythm and solfege if you can!

Take a moment to go through and identify the key signatures below:



— — — — — — — —



— — — — — — — —

Key Signature Answers:

C G D A E B F# C#

F B \flat E \flat A \flat D \flat G \flat C \flat



Extra Practice:

Teoria is another good site for extra practice. It's pretty comprehensive, and offers in depth knowledge into many music theory topics. The reading music section is helpful for this topic, but there are many other topics to explore. Check out Time Signatures, Eighth and Sixteenth Notes/Rests, and Dotted Notes/Ties.

[Teoria Theory Practice](#)